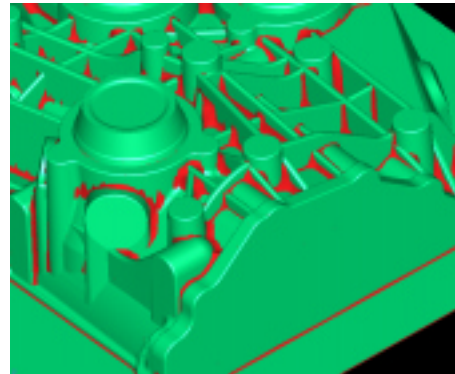


## WorkNC-Viewer

Improve information flow by viewing and sharing WorkNC programmes around your factory. Machine operators can view toolpaths and setup information autonomously, leaving production managers, designers and programmers free to continue with the next job

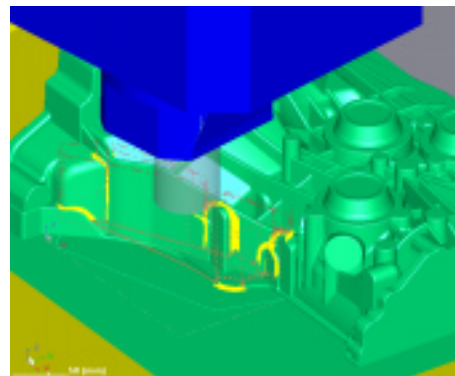
### ■ **Display toolpaths in action.** -

- View 3 axis, 3+2 and 5 axis toolpaths including cutters and holders.
- Check the sequence of operations and the toolpath trajectory before machining begins.
- Carry out machining with confidence with a clear understanding of the cutting process.
- Show the Stock Model for each operation.
- See the amount of material to be removed at each stage to verify successful and trouble free machining.
- Check the Rest Material model.
- Examine the material left after each operation.
- Ensure the part is completely finish machined.
- Verify the cutter path and the complete sequence of operations.
- Maintain high quality standards with right first time manufacture.



### ■ **Model measurement.** -

- Check dimensions of holes, radii, grooves and any other features on the model.
- Check Z level heights, tool lengths etc.



### ■ **View documentation locally.** -

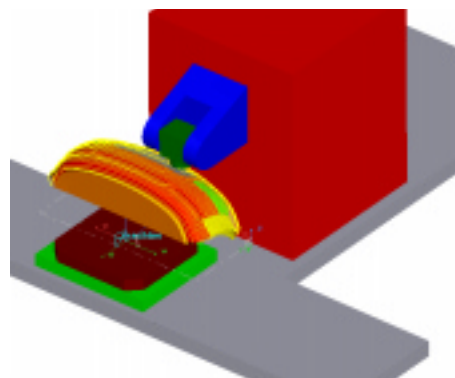
- View set up sheets and machining information at the point of use.

### ■ **Effective data sharing.** -

- Instantly supply updated and accurate information to where it is required.
- Speed up manufacture and improve quality by using the correct information delivered at the right time.

### ■ **Easy to use.** -

- Simple intuitive interface.



NB. WorkNC-Viewer has been developed exclusively for WorkNC users and is not sold separately.

